



ORGANIZE.

IDENTIFY.

SIMPLIFY.

**P-touch®**  
ELECTRONIC LABELING SYSTEM

**PT-1960**

Perfect For The  
Home Office or  
The Corner Office

#### UNIQUE FEATURES

**AC ADAPTER**

**AUTO CUTTER**

**PC READY\***

**2 LINE LCD DISPLAY**

\* Supports only Windows® compatible PCs.

#### INCLUDES

- (1) TZ 1/2" 5m Starter Tape, AC Adapter (AD-60), CD-ROM with Label Creation Software & Printer Drivers, **USB Cable**, and **Protective Carrying Case**.



- Connect to your PC\* to use more fonts, add graphics, or print from databases.

- Small desktop design — perfect for helping organize any home office or office.

- High-quality, easy-to-read labels in seconds.

- **Flexible:** Prints up to 5 lines, with 64 type sizes/style combinations.

- Perfect for file folders, binders, property labels, or virtually anything that needs a label.



At your side.  
**brother®**

© 2004 Brother International Corporation



ORGANIZE.

IDENTIFY.

SIMPLIFY.

# P-touch<sup>®</sup>

ELECTRONIC LABELING SYSTEM

## PT-1960

### Quality Features

- Automatic tape cutter
- LCD Display with font viewer, 10 x 2 line
- Prints 2 fonts, 8 type sizes, 8 type styles, and vertical formats
- Prints up to 5 lines of text
- Prints 30 unique symbols
- "TZ" tape available in 1/4", 3/8", 1/2" & 3/4" widths†
- Prints up to 52-point type (appr.)

### Product Specifications

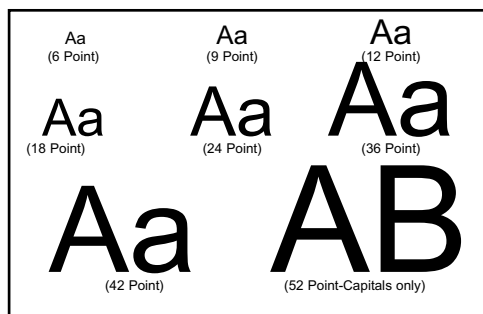
- Unit Dimensions: 7.1" (w) x 9.2" (d) x 2.4" (h)
- Unit Weight 1.7 lbs. (without tape & batteries)
- UPC Code: 0 12502 61042 7

### Scannable Bar Code



### Create the Perfect Label

#### 8 TYPE SIZES



#### 8 TYPE STYLES



#### PRINTS VARIOUS COLOR COMBINATIONS

	1/4" (6mm)	3/8" (9mm)	1/2" (12mm)	3/4" (18mm)
Black on White	✓	✓	✓	✓
Black on Yellow			✓	✓
White on Black	✓	✓	✓	✓
Black on Clear	✓	✓	✓	✓
Gold on Black			✓	✓
Black on Red		✓		✓
Red on White			✓	✓
Black on Fluorescent Orange				✓
Black on Clear Matte				✓
Black on Blue				✓
Blue on White				✓
Black on Green				✓
White on Blue				✓
White on Clear			✓	✓

#### INDUSTRIAL TAPES

Black on Clear	✓	✓	✓	✓
Black on White	✓	✓	✓	✓
White on Clear			✓	✓
Black on Yellow	✓	✓	✓	✓
Black on Silver (matte)				✓

#### SPECIALTY TAPES

Blue on White Iron-on Fabric			✓	
Black on White Security Tape				✓

All tapes are 26.2' long (8m) except black on fluorescent orange 16.4' long (5m) and fabric tape 9.8' long (3m).

†Additional purchase required.

### System Requirements\*

Computer	PC compatible
Operating System	Win: 98/ 98SE/ ME/ 2000 Pro/ XP Pro/ XP Home
CPU	Intel® Pentium® 266 MHz or higher (700MHz or higher recommended)
RAM	64MB or more
Hard Disk Free Space	50MB or more
Interface	USB 1.1 or later specification
Other	CD-ROM drive for installation

\*System can operate without PC connection

### INCLUDES:

- (1) TZ 1/2" 5m Starter Tape
- AC Adapter (AD-60)
- CD-ROM with Label Creation Software and Printer Drivers
- USB Cable
- Protective Carrying Case.



For more information visit our Web site at <http://www.brother.com> or please call the Brother Fax-Back system at 1-800-521-2846 (USA), 1-800-681-9838 (Canada)

At your side.™  
**brother**®

[www.brother.com](http://www.brother.com)

© 2004 Brother International Corporation  
100 Somerset Corporate Blvd., Bridgewater, NJ 08807

Brother is a registered trademark of Brother Industries, Ltd. All other brand and product names are registered trademarks or trademarks of their respective companies. Specifications subject to change without notice. Printed in the U.S.A. CATPT1960